

REFRIGERATOR MANAGEMENT

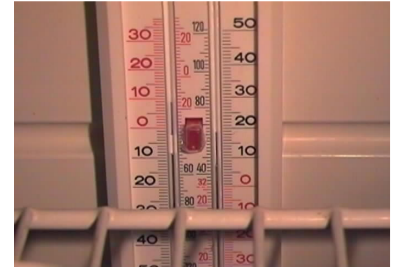
The following pictures give a flavour of the sorts of problems encountered on many farms with cold medicine storage



This fridge is running too cold and the lower bottle is frozen. Too hot is just as bad



This fridge is dirty and over-full. It is essential that there is adequate air circulation. Note no ice box cover



Ensure the fridge has a max/min thermometer to record the range of temperatures achieved. Check daily



This fridge requires defrosting. The products are at a serious risk of freezing



Here bottles and syringes are stored dirty. This can cause infection and abscessation at the injection site



Several bottles of the same medicine open at the same time. Poor medicine management



The fridge should be lockable and secure and out of reach of children



This fridge is overstocked. Air cannot circulate properly and if the fridge fails, a high value of stock will be lost



Food in fridge especially pork products is a serious biosecurity risk



Vaccines in door of fridge. Keep the thermometer near the vaccines